

About Little Bluff

Little Bluff is a 19-acre nature preserve in the heart of Trempealeau, Wisconsin, a Mississippi River town. The property is owned by the Mount Calvary Lutheran Church ELCA, maintained by the Friends of Little Bluff, and permanently protected by Mississippi Valley Conservancy. The church welcomes the public to walk to the historic blufftop site. Please stay on the designated trail.

The land adjoins another Conservancy nature preserve to the north and Perrot State Park to the west. Perrot, in turn, adjoins the Great River State Trail and the USFWS Upper Mississippi River National Wildlife and Fish Refuge, creating a corridor of over 1,500 acres dedicated to wildlife habitat.

The land is within the Mississippi River migratory flyway, and its numerous fruit and nut trees provide food and shelter for migrating songbirds. Historically the blufftop would have been a mix of prairie and oak savanna, and indicators of that history are still visible, as broad spreading bur oak and white oak trees flank the trail along the ridgetop.

The Little Bluff Mounds Interpretive Trail, developed by the Friends of Little Bluff, highlights the changes that ancient Mississippian people made to this landscape. A thousand years ago, some residents of Cahokia, in present-day Illinois, traveled 530 miles up the Mississippi River and founded a community at Trempealeau. Those who visit the Little Bluff Mounds Interpretive Trail can learn what archaeologists have discovered.

Activities allowed

Hiking on main trail, wildlife observation

Activities NOT allowed

Dog walking, biking, removing plants, camping, hunting, trapping

Please respect landowners near Conservancy tracts by observing property boundaries, and stay on the trail to minimize disturbance to wildlife.

Some plants and wildlife seen here

- Bur oak
- Hackberry
- Hickory
- Mulberry
- White oak
- Elderberry
- Black-cap raspberry
- Wild grape
- Big bluestem
- Prairie spiderwort
- Prairie tick-trefoil
- American robin
- Blue jay
- Chipping sparrow
- Northern cardinal
- Pileated woodpecker
- Eastern wood pewee
- Gray catbird
- Cottontail rabbit
- Fox squirrel
- Whitetail deer



Pileated woodpecker



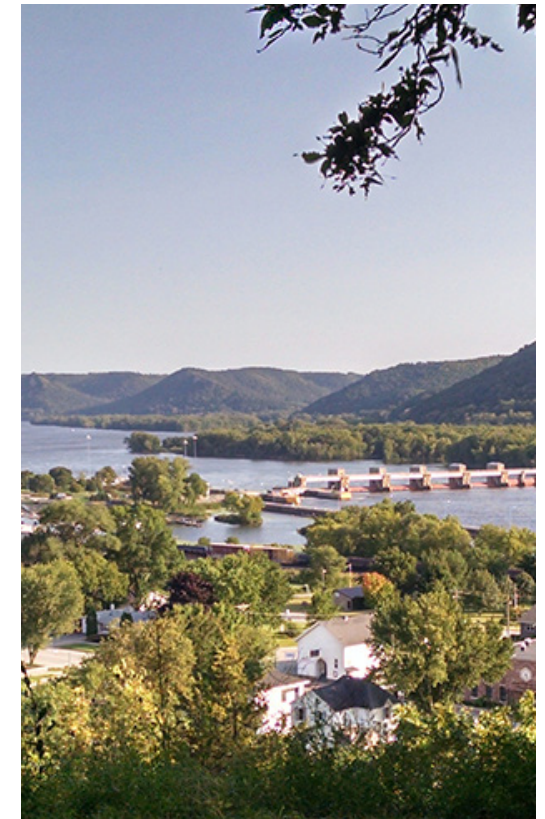
1309 Norplex Drive, Suite 9
La Crosse, WI 54601
608-784-3606
www.mississippivalleyconservancy.org

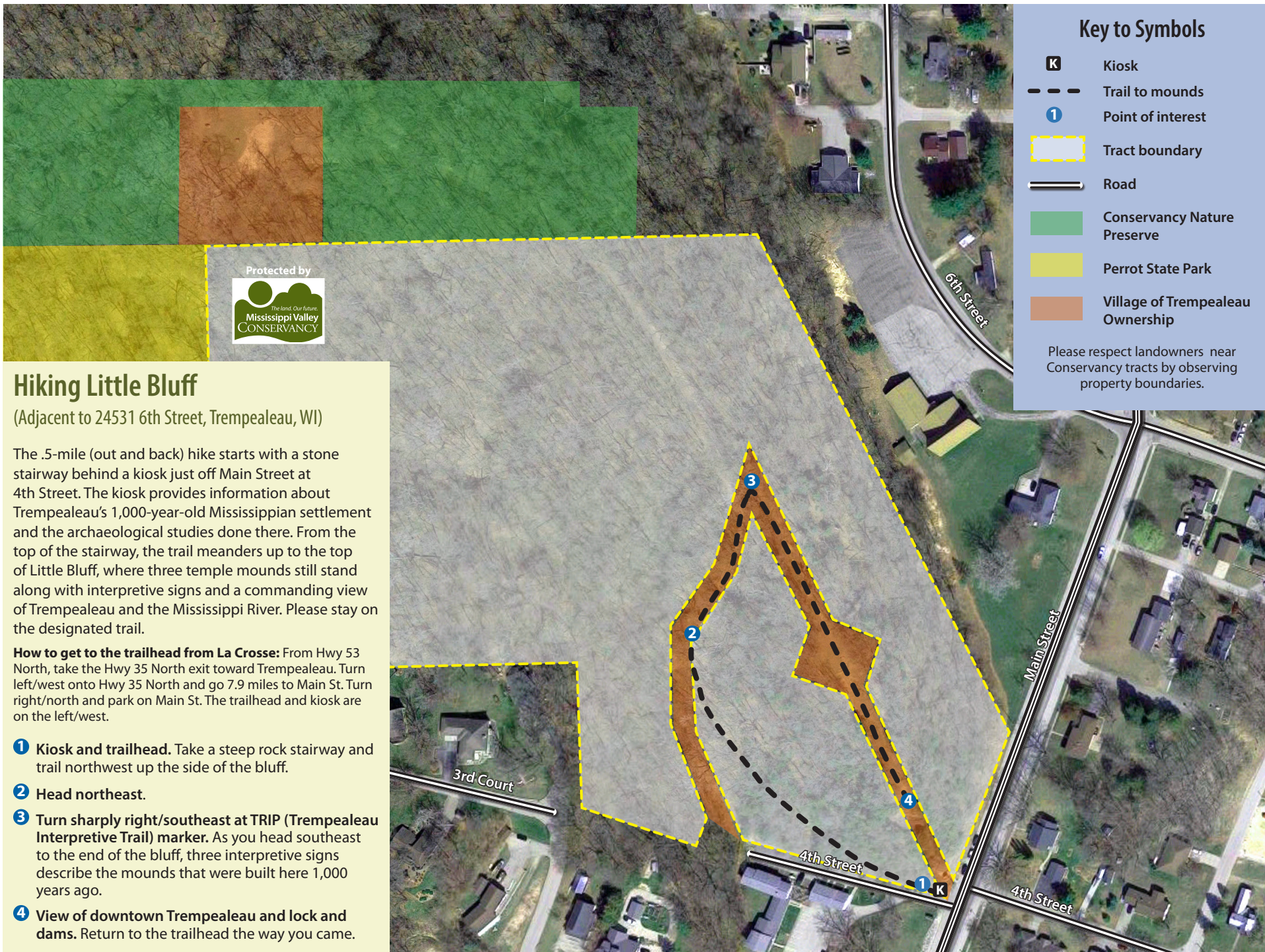


TRAIL MAP

Little Bluff

Village of Trempealeau, Wisconsin





Key to Symbols

- K** Kiosk
- - - Trail to mounds
- 1** Point of interest
- [Yellow dashed box] Tract boundary
- [Double line] Road
- [Green box] Conservancy Nature Preserve
- [Yellow box] Perrot State Park
- [Brown box] Village of Trempealeau Ownership

Please respect landowners near Conservancy tracts by observing property boundaries.

Hiking Little Bluff

(Adjacent to 24531 6th Street, Trempealeau, WI)

The .5-mile (out and back) hike starts with a stone stairway behind a kiosk just off Main Street at 4th Street. The kiosk provides information about Trempealeau’s 1,000-year-old Mississippian settlement and the archaeological studies done there. From the top of the stairway, the trail meanders up to the top of Little Bluff, where three temple mounds still stand along with interpretive signs and a commanding view of Trempealeau and the Mississippi River. Please stay on the designated trail.

How to get to the trailhead from La Crosse: From Hwy 53 North, take the Hwy 35 North exit toward Trempealeau. Turn left/west onto Hwy 35 North and go 7.9 miles to Main St. Turn right/north and park on Main St. The trailhead and kiosk are on the left/west.

- 1** Kiosk and trailhead. Take a steep rock stairway and trail northwest up the side of the bluff.
- 2** Head northeast.
- 3** Turn sharply right/southeast at TRIP (Trempealeau Interpretive Trail) marker. As you head southeast to the end of the bluff, three interpretive signs describe the mounds that were built here 1,000 years ago.
- 4** View of downtown Trempealeau and lock and dams. Return to the trailhead the way you came.