

Eagle Eye State Natural Area



Legend

- Eagle Eye SNA Boundary
- Hiking Trails
- Future Parking Lot
- Access Point

0 175 350 700 1,050 1,400 Feet



Vernon County
Coon Township
T14N R5W
Section 18

Conserve - Enjoy - Explore

Mississippi Valley Conservancy - 608-784-3606 - info@mississippivalleyconservancy.org - www.mississippivalleyconservancy.org



Directions

From La Crosse, WI: Head south on State Highway 35 and turn left onto County Road K to Chaseburg. From Chaseburg, stay County Road K for 2.7 miles. Turn left/east onto County Road O (turn left then right to stay on O) for almost 5 miles. Turn left/east onto Upper Newton Road for just over 1 mile and look for the MVC sign. The property is to the north of Upper Newton Road just past the driveway at E4337 Upper Newton Road.

From Viroqua, WI: Head west out of town on State Highway 56 for almost 8 miles and turn right/north onto County Road O. Follow O for 3.6 miles and turn right/east onto Upper Newton Road for just over 1 mile and look for the MVC sign. The property is to the north of Upper Newton Road just past the driveway at E4337 Upper Newton Road.

Eagle Eye

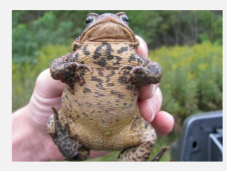
State Natural Area

Description

Eagle Eye State Natural Area is a 70-acre tract of land within the Cade Archaeological District. This land was protected through a partnership between Mississippi Valley Conservancy, Mississippi Valley Archaeology Center, The Archaeological Conservancy, and the State of Wisconsin's Knowles-Nelson Stewardship Program.



The site includes scenic ridge top bluffland, including native goat prairie, oak opening, sandstone cliffs and rock shelters, forest, wetlands, and a portion of the Bad Axe River. The property is in the National Register of Historic Places for its eagle-eye rock shelter and 7 effigy mounds. The mounds include a bear, panther, turtle, two bird effigy's, and two linear mounds; all facing the river and dating to approximately 1050 AD. The area also includes the largest population in the state of the state-threatened cherrystone drop snail, as well as populations of the state threatened cerulean warbler and four-toed salamander. This area is a popular trout fishing location only ¼ mile west of Duck Egg County Park. The land is now open to the public for hiking, hunting, fishing, snowshoeing and cross-country skiing.



Stewardship

The purchase was made in partnership with The Archaeological Conservancy, a national archaeological organization, and the state's Knowles-Nelson Stewardship Fund. "The work of land conservation is not just about protecting nature—plants, animals and ecosystems—but also protecting human values and cultural landscapes." —William Cronon, University of Wisconsin-Madison.



Conserve. Enjoy. Explore.

What Can I do at Eagle Eye State Natural Area?

- ◆ Open to the public for hunting, fishing, canoeing, hiking, wildlife observation cross-country skiing and snowshoeing. (See trail map)
- ◆ Hikers and encouraged to take precautions during hunting seasons.
- ◆ Provide environmental education to area school groups.
- ◆ You can help keep our preserve beautiful by carrying out your trash.

Mississippi Valley Conservancy

Mississippi Valley Conservancy was formed by a group of local citizens that responded to growing development in the blufflands of southwestern Wisconsin by organizing a land trust to ensure conservation of the remaining special places in this region.

MVC works with willing landowners to protect our region's beautiful and natural areas for the enjoyment of current and future generations. We focus on areas of scenic, biological, agricultural and cultural importance throughout nine counties of southwestern Wisconsin (Buffalo, Trempealeau, Jackson, Monroe, La Crosse, Vernon, Crawford, Richland and Grant). Our various tools for land conservation include:

- ◆ Conservation Agreements
- ◆ Land Donations & Purchases
- ◆ Land Acquisition

You can help! Please become a contributing member by sending a tax-deductible donation to:

Mississippi Valley Conservancy
1309 Norplex Dr., Suite 9
P.O. Box 2611
La Crosse, WI 54602
(608) 784-3606

info@MississippiValleyConservancy.org

