

## About Tunnelville Cliffs

The Conservancy permanently protected 150 acres of Tunnelville Cliffs in May 2005 and the DNR designated the site as a State Natural Area in 2006. Among its many features are east-facing Cambrian sandstone cliffs with seepages at the base, the Kickapoo River and an associated wetland, a small goat prairie, wooded ridges, and a hilltop with a fantastic overlook of the valley.

In December 2009, the Babson family donated 1,118 acres on the Kickapoo River north of Viola. The site includes springs, creeks, over 9,000 feet of frontage on the Kickapoo River, forests, cliffs, prairie, sedge meadow, and open grasslands.

In May 2013, the Babson family signed a conservation agreement on 983 additional acres and two adjacent landowners signed conservation agreements on their properties. The Conservancy has now protected 2,278 contiguous acres on the Kickapoo River.

The 1,118-acre portion is open for public access. The 983-acre conservation easement portion remains under the private ownership of the Babson family, although it is permanently protected from inappropriate development and mining. This portion of the farm is not open to the public, and it remains on the tax rolls.

### Activities allowed

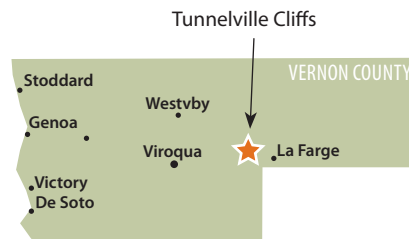
Hiking, birding, nature photography, snow-shoeing, cross-country skiing, canoeing; hunting and fishing are allowed according to state and local ordinances

### Activities NOT allowed

Dog-walking, seed collection, taking flora or fauna, motorized vehicles, camping

### Some plants and animals seen here

- ☐ Common milkweed
- ☐ Evening primrose
- ☐ False Solomon's seal
- ☐ Jack-in-the-pulpit
- ☐ Purple aster
- ☐ Blue-winged warbler
- ☐ Cerulean warbler
- ☐ Henslow's sparrow (state threatened)
- ☐ Least flycatcher
- ☐ Sedge wren
- ☐ Eastern milk snake



1309 Norplex Drive, Suite 9  
La Crosse, WI 54601  
608-784-3606

[www.mississippivalleyconservancy.org](http://www.mississippivalleyconservancy.org)

Please respect landowners near Conservancy tracts by observing property boundaries.



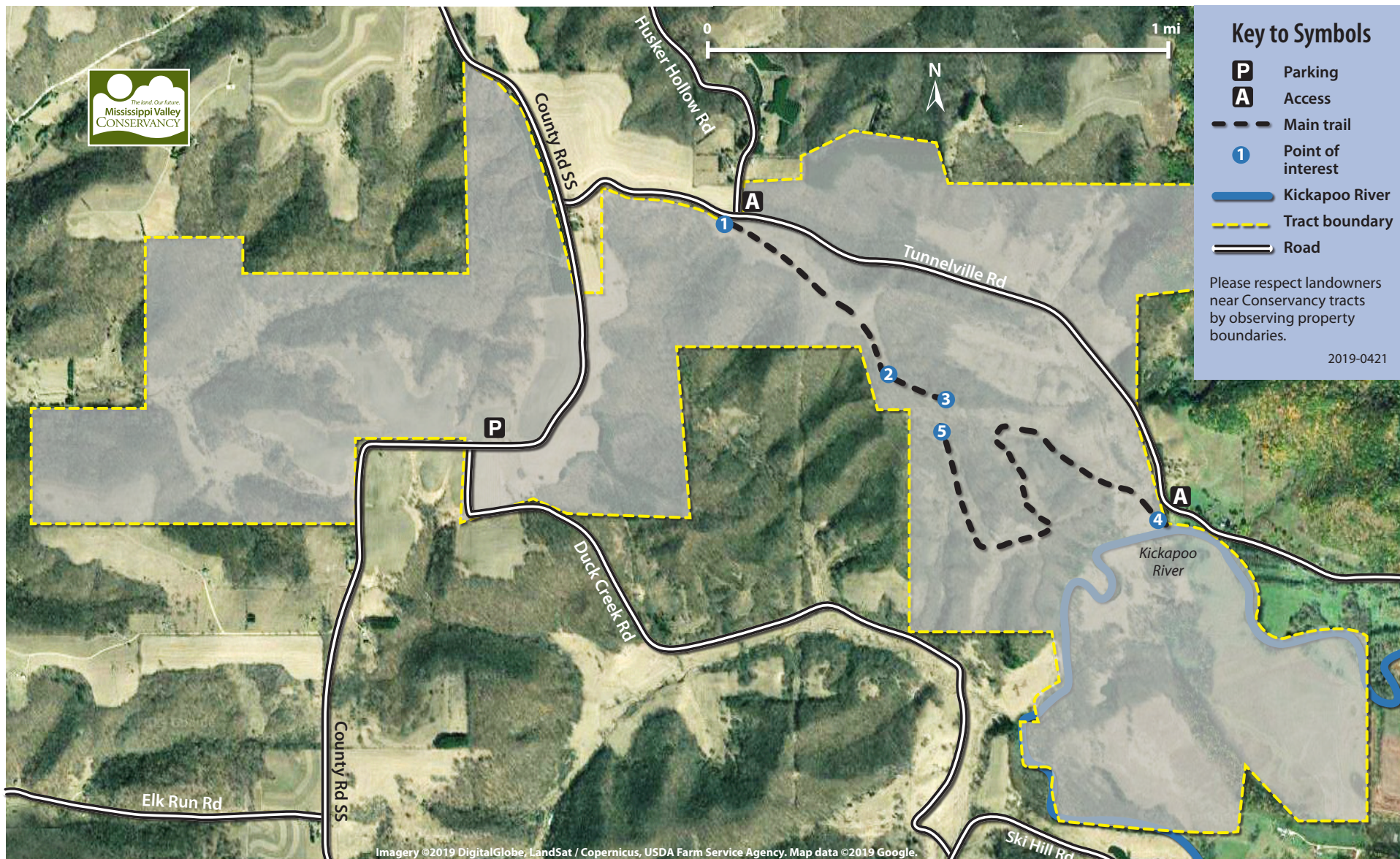
TRAIL MAP

## Tunnelville Cliffs

E11639 Tunnelville Rd, La Farge, Wisconsin







## Hiking Tunnelville Cliffs State Natural Area (Eastern access: E11639 Tunnelville Road, La Farge, WI )

Two trails end near each other but at different altitudes; they do not connect.

**How to get to the trail access points from La Crosse:** **1 Northern access:** Take 14/61 east to Westby. In Westby turn left onto Hwy 27 for .5 miles, then right onto County Road P. Follow P until you reach County Road D. Turn right onto D and follow it until you reach Hwy 82. Turn right and take the first left, onto Husker Hollow Rd. Follow it to Tunnelville Rd and park along the road. Do not block gate.

**4 Eastern access:** See above. At Husker Hollow Rd, turn left onto Tunnelville Rd and go 3 miles. Park along the road.

**North Entrance Hike (1.6 mi round trip):** Start at gate **1** and hike through a relatively flat grassland to **2**, where you'll enter a small wooded area before emerging onto a goat prairie **3** with beautiful views of the surrounding valley.

**East Entrance Hike (2.5 mi round trip):** **May be inaccessible in wet weather.** Cross Kickapoo River tributary **4** and follow a wide mowed path that rises 200 feet, traversing open valleys with beautiful views. At **5** explore the area before retracing your steps.