


## Key to Symbols

- P** Parking and gate
- Trail
- 1** Point of interest
-  Boat launch
- - - Tract boundary
- Road

Please respect landowners near Conservancy tracts by staying on the trail and turning back when signs indicate private property.



## Trempealeau Lakes

(Intersection of Lake Rd & Pickerel Path, Trempealeau)

This ¾-mile flat, wide trail traverses deciduous and pine woods with side trails leading to fishing spots. **Trail may be flooded or wet during spring and other high-water periods.**

**How to get to the trailhead/parking lot from La Crosse:** Follow Hwy 35 (Great River Road) north to Trempealeau. Turn left on unmarked Fremont St (the road to the lock and dam). It becomes Lake Rd near the lock and dam turnoff. Turn left on the next road, unmarked gravel Pickerel Path, and follow it 0.3 mi to a parking place near the lakeshore/boat launch.

- 1** Start at the parking area gate and head northwest. You'll pass short side trails to fishing spots, and then the trail turns west on a wide, mowed path through deciduous woods.  
43° 59.921'N, -91° 25.431'W
- 2** Turn right (north) at a Y in the trail and follow it to **3**, another fishing spot.  
43° 59.947'N, -91° 25.598'W
- 3** Turn left (west) for a walk through a cathedral-like pine forest. Watch for stumps in the path!  
43° 59.988'N, -91° 25.599'W
- 4** At another MVC gate (an additional parking spot), turn left (east) to return to the Y at **2** and veer right (east) to return to the parking area. Instead, you may exit to Pickerel Path at **4** and follow it east to the parking area.  
43° 59.922'N, -91° 25.735'W





# Hiking the New Amsterdam Grasslands Tract

(W7900 Old NA, New Amsterdam, WI)

The trails follow the boundaries of an open, rolling prairie. A short trail (a little over a mile) is open year-round. A longer one (2.8 mi) is closed during nesting season, April, May, June, and July.

**How to get to the trailhead/parking lot from La Crosse:** Follow Hwy 53 north to exit MH. Exit right and follow to stop sign. Turn left onto MH and follow to XX. Turn right on XX and follow it into New Amsterdam. Turn right onto Old NA and follow it for approximately ½ mile to the trailhead and parking lot, which are on the left.

- 1 Start at the kiosk in the parking area and head north through a pedestrian gate.**  
43° 59.076'N, -91° 18.036'W
- 2 Turn left here to complete a 1.1-mile loop, taking you back to the parking area. From August through April you may turn right (through a maintenance gate) and walk a 2.8 mi loop in either direction. This area is closed for bird nesting from April through July.**  
43° 59.282'N, -91° 18.031'W



## Key to Symbols

- P** Parking and kiosk
- - - Trail open all year
- - - Trail open August–March
- 1** Point of interest
- - - Tract boundary
- Road

Please respect landowners near Conservancy tracts by staying on the trail and turning back when signs indicate private property.





## Hiking Holland Sand Prairie State Natural Area

(W7781 County Rd MH, Holmen, WI)

The trail follows the boundaries of an open, rolling prairie.

**How to get to the trailhead/parking lot from La Crosse:** Follow Hwy 53 north to County Rd MH. Turn left on to McHugh Rd and follow it to the trailhead, which is just past (west of) Beaver Builders' Supply. Trailhead and parking area are on the left (south) side of MH.

**1** Start at the kiosk at the parking area and head either east or west along a 1.3-mile mowed trail along the property's perimeter.

43° 58.203'N, -91° 17.079'W

At times, other paths may be mowed so that you can explore the interior of the property.



**3**  
Hike to  
Wellness  
~1.3 mi

### Key to Symbols

**P** Parking and kiosk

--- Trail

**1** Point of interest

--- Tract boundary

— Road

Please respect landowners near Conservancy tracts by staying on the trail and turning back when signs indicate private property.





## Hiking Greens Coulee-Savannah Oaks Tract

The main trail is an out-and-back .6-mile (one way) trail that climbs 300 feet to an overlook. Two side trails, sometimes steep and rocky, connect to the Greens Coulee Park trails, shown in gray on the map. For a detailed trail map of Greens Coulee Park, visit [cityofonalaska.com](http://cityofonalaska.com) and search for *Greens Coulee Park*.



**How to get to the Clifford Drive parking area from La Crosse:** Take Hwy 16 north to Hwy 157 (Valley View Mall intersection). Turn left and continue on Hwy 157/Hwy 53 North to the Main St exit. At the bottom of the ramp, turn right at the light and then immediately left onto Green Coulee Rd. Go 1.3 mi to Clifford Dr. You may park in the Clifford Dr cul-de-sac from May through October.

- 1** Start at the Clifford Dr trailhead.  
43° 53.866' N, -91° 11.72' W
- 2** The trail splits. Turn sharply left as a side trail goes straight and connects with Greens Coulee Park trails.  
43° 53.813' N, -91° 11.44' W
- 3** A side trail turns sharply right. It leads to a rock formation **4** and an overlook and continues via a steep path to connect to Greens Coulee Park trails.  
43° 53.850' N, -91° 11.404' W
- 5** The trail ends at a goat prairie with a beautiful overlook. Return to the parking area by retracing your route.  
43° 53.924' N, -91° 11.606' W

### Key to Symbols

<b>P</b>	Parking	<b>1</b>	Point of interest
---	Main trail	★	Overlook
.....	Side trail	- - - -	Tract boundary
—	Greens Coulee Park trail	—	Road

Please respect landowners near Conservancy tracts by staying on the trail and turning back when signs indicate private property.









# Hiking La Crosse Blufflands North: Skemp & Lenox Tracts

(W5845 Cty Rd B, La Crosse, WI)

Climb almost 500 feet to the top of the bluff on a steep old quarry road. Please respect the property boundary signs at the top. A side trail leads to an overlook of the Mississippi River. The round trip to the overlook is approximately 1.5 miles.

**How to get there from La Crosse:** Follow Hwy 16 north to Cty Rd B. Turn right and go ½ mile to just past Bethany Church. On the right is a parking area with a kiosk.

- 1 Start at the kiosk in the parking lot off County Road B. Climb the old blacktop quarry road to the top.  
43° 51.554'N, -91° 2.246'W
- 2 At the top is a gate. Please don't go past it. A side trail west and north leads to an overlook.  
43° 51.080'N, -91° 12.248'W
- 3 Enjoy a beautiful view of La Crosse and, in the distance, the Mississippi River.  
43° 51.132'N, -91° 12.293'W

## Key to Symbols

- P** Parking
- — — Main trail
- ..... Side trail
- ① Point of interest
- ★ Overlook
- Stop! (Entering private property or dangerous area)
- - - - - Tract boundary
- Road

Please respect landowners near Conservancy tracts by staying on the trail and turning back when signs indicate private property.





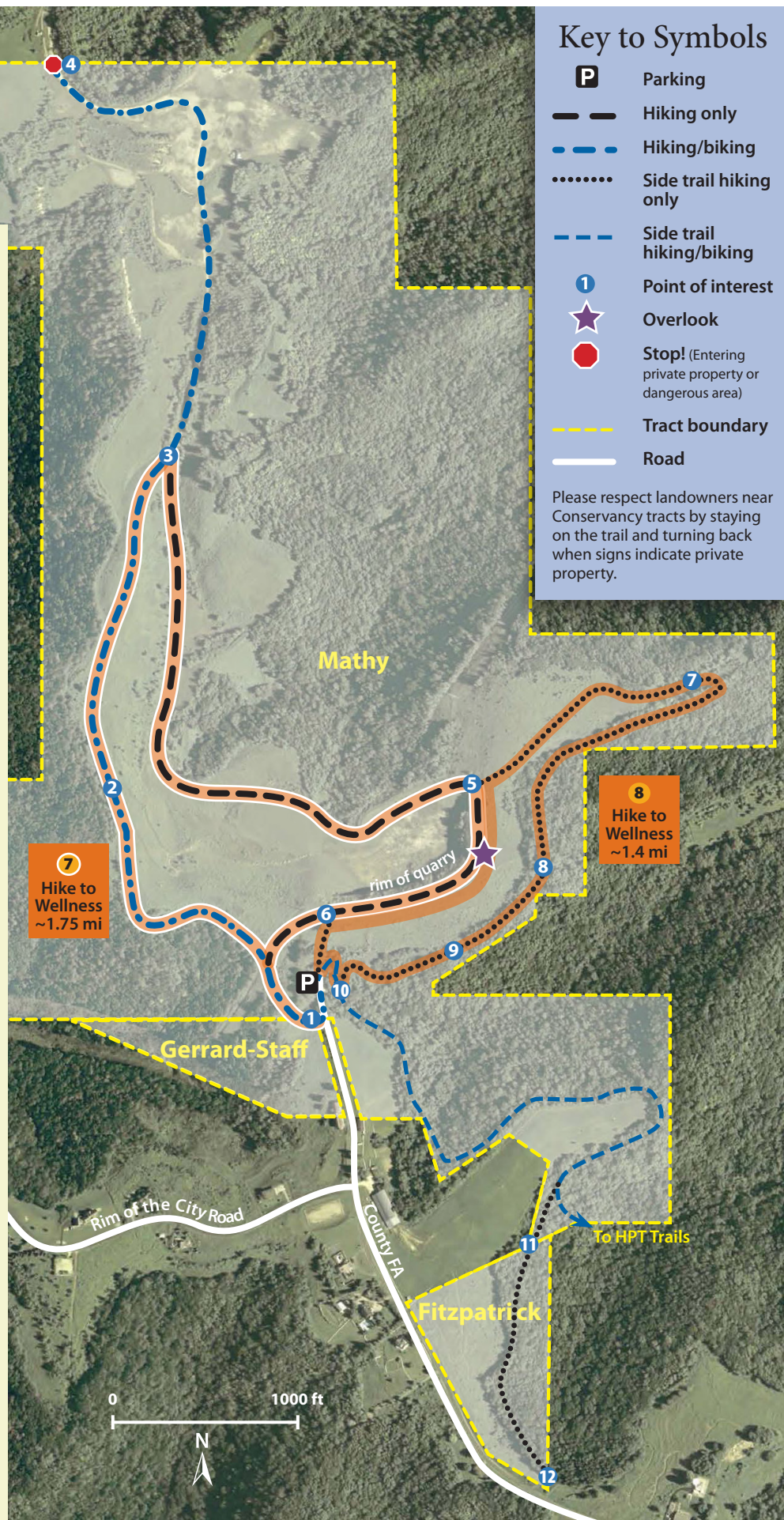


## Hiking La Crosse Blufflands North— Mathy, Gerrard-Staff, and Fitzpatrick Tracts

Enjoy mostly open, rolling terrain in an old quarry. There's a somewhat steep climb up to point 5. Side trails traverse woods and prairie adjacent to the quarry. The main trail is approximately 2.75 miles.

**How to get to the trailhead/parking lot from the intersection of Losey Boulevard and Main Street:** Head east on Main St. It turns into Bliss Rd., which winds up the bluff. Approximately .5 mi past the turnoff to Grandad Bluff, turn left on County FA and drive 1.5 mi to a parking area at FA's end.

- 1 Start at the gate on the west side of the turnaround at the end of FA.  
43° 49.787'N, -91° 11.950'W
- 2 A large rock is a landmark.  
43° 49.969'N, -91° 12.200'W
- 3 At a T intersection, head left (north).  
43° 50.305'N, -91° 12.129'W
- 4 Please do not go north past the MVC property signs here. Turn around and follow the road back to 3 and then go straight, through the quarry and up a hill to the quarry's rim 5.  
43° 50.651'N, -91° 12.285'W
- 5 You're at the top of the quarry cliff. A right turn takes you along the rim of the quarry back to the gate. If instead you head straight, you'll enjoy a 1-mi hike that includes a birch grove 7, a wooden boardwalk 8, and a small pine forest 9 before heading back toward the parking lot.  
43° 50.015'N, -91° 11.760'W
- 6 At this point you may take a shortcut through the prairie back to the parking lot.  
43° 49.900'N, -91° 11.920'W
- 10 Coming from point 9, at a T intersection turn right to curve back to the parking lot. Turning left at the T intersection starts a pleasant, rolling, wooded 1-mi trail that ends near Hwy FA at 12. At 11, a barricade prevents bicyclists from continuing on the hike-only part of the trail; they are diverted to the HPT system just before 11.  
43° 49.822'N, -91° 11.935'W







## Hiking La Crosse Blufflands North— Mathy, Gerrard-Staff, and Fitzpatrick Tracts

Enjoy mostly open, rolling terrain in an old quarry. There's a somewhat steep climb up to point 5. Side trails traverse woods and prairie adjacent to the quarry. The main trail is approximately 2.75 miles.

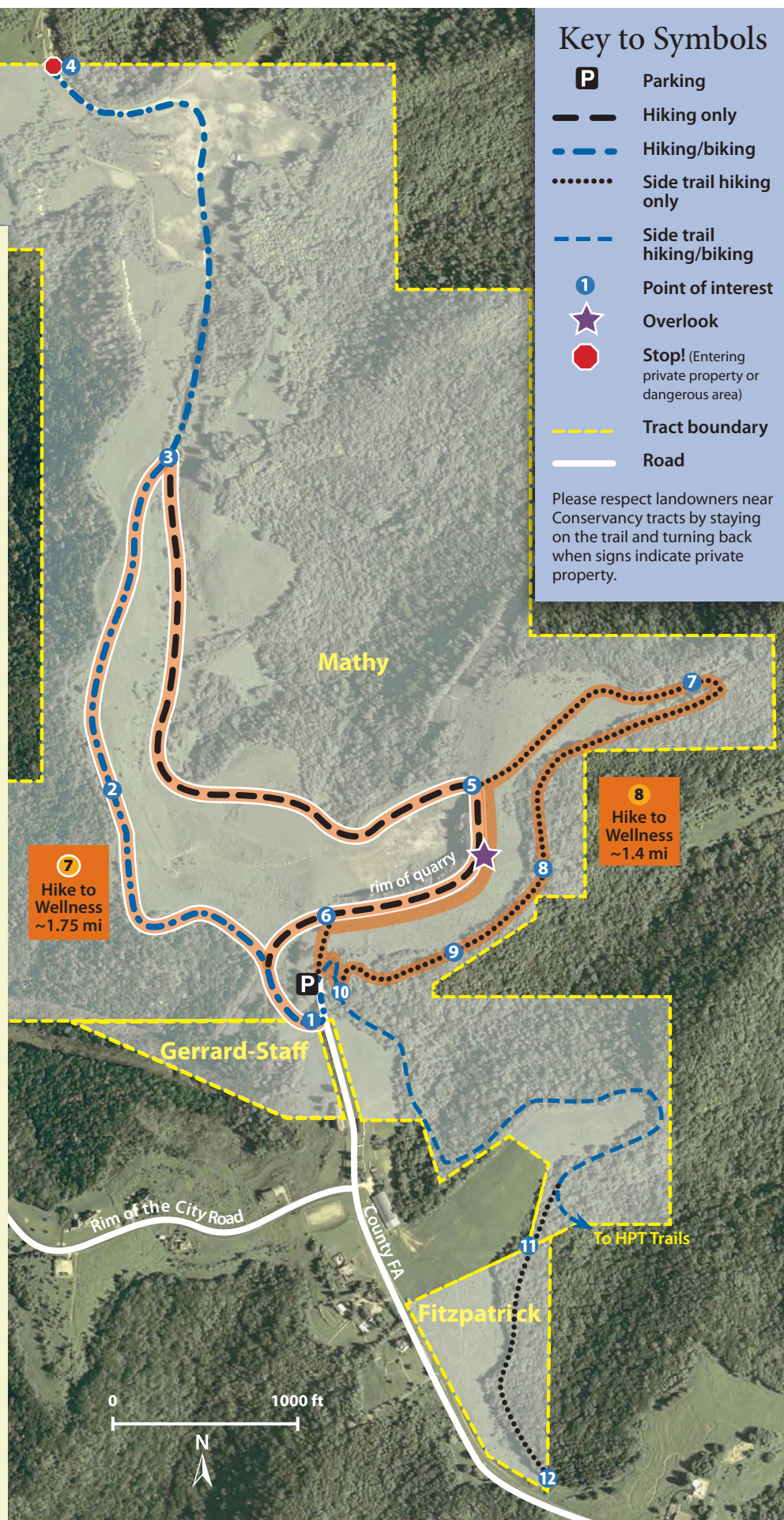
**How to get to the trailhead/parking lot from the intersection of Losey Boulevard and Main Street:** Head east on Main St. It turns into Bliss Rd., which winds up the bluff. Approximately .5 mi past the turnout to Grandad Bluff, turn left on County FA and drive 1.5 mi to a parking area at FA's end.

- 1 Start at the gate on the west side of the turnaround at the end of FA.  
43° 49.787'N, -91° 11.950'W
- 2 A large rock is a landmark.  
43° 49.969'N, -91° 12.200'W
- 3 At a T intersection, head left (north).  
43° 50.305'N, -91° 12.129'W
- 4 Please do not go north past the MVC property signs here. Turn around and follow the road back to 3 and then go straight, through the quarry and up a hill to the quarry's rim 5.  
43° 50.651'N, -91° 12.285'W
- 5 You're at the top of the quarry cliff. A right turn takes you along the rim of the quarry back to the gate. If instead you head straight, you'll enjoy a 1-mi hike that includes a birch grove 7, a wooden boardwalk 8, and a small pine forest 9 before heading back toward the parking lot.  
43° 50.015'N, -91° 11.760'W
- 6 At this point you may take a shortcut through the prairie back to the parking lot.  
43° 49.900'N, -91° 11.920'W
- 10 Coming from point 9, at a T intersection turn right to curve back to the parking lot. Turning left at the T intersection starts a pleasant, rolling, wooded 1-mi trail that ends near Hwy FA at 12. At 11, a barricade prevents bicyclists from continuing on the hike-only part of the trail; they are diverted to the HPT system just before 11.  
43° 49.822'N, -91° 11.935'W

### Key to Symbols

- P** Parking
- Hiking only
- - - Hiking/biking
- ..... Side trail hiking only
- - - Side trail hiking/biking
- 1 Point of interest
- ★ Overlook
- Stop! (Entering private property or dangerous area)
- - - Tract boundary
- Road

Please respect landowners near Conservancy tracts by staying on the trail and turning back when signs indicate private property.





## Hiking the Beck Tract (Miller Bluff)

A network of trails—the main one flat and wide, the secondary ones steep and rocky—provides access to three west-facing promontories overlooking the La Crosse River Marsh.

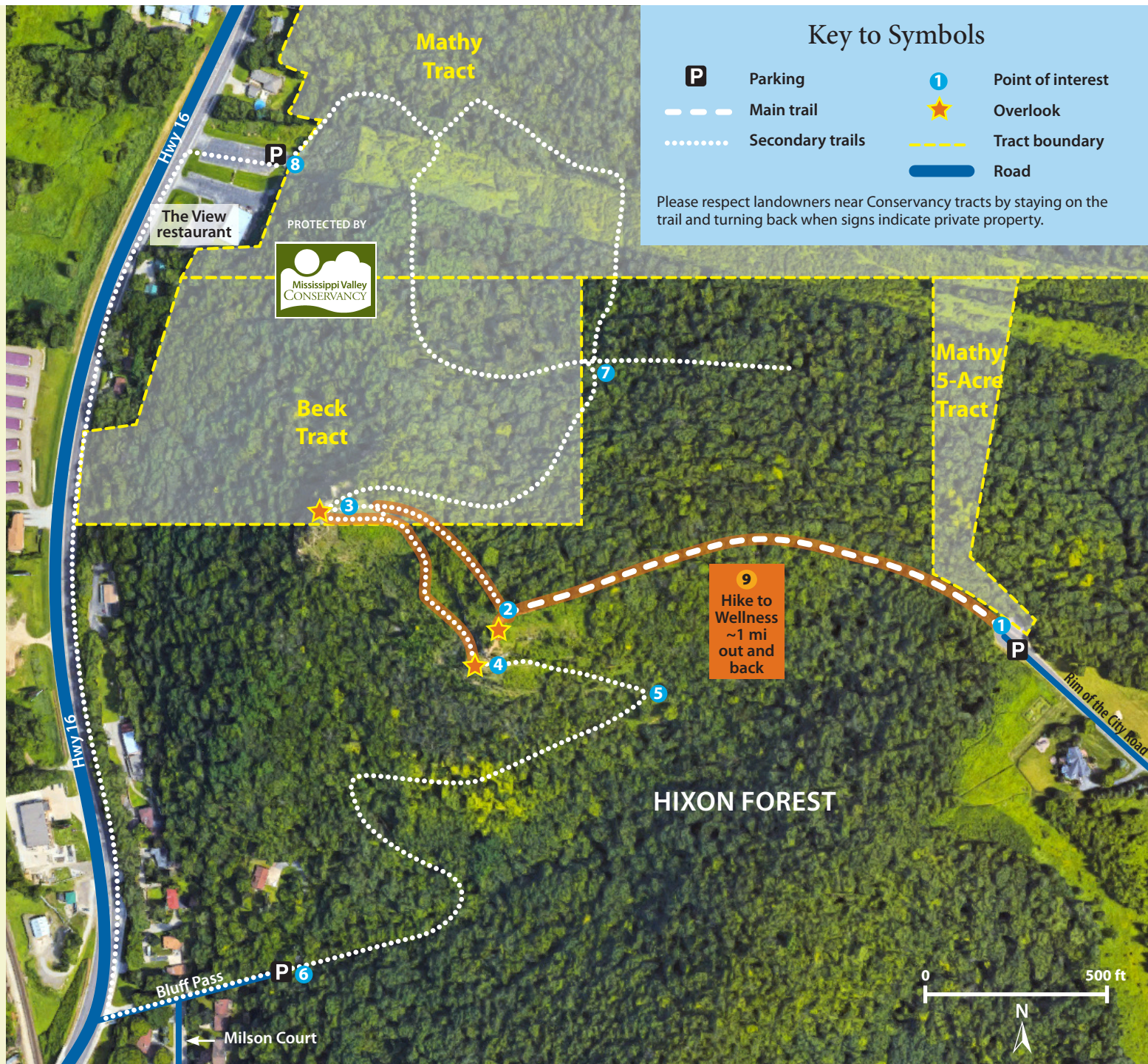
**How to get to the Rim of the City trailhead/parking area 1 from Losey & Main Streets in La Crosse:** Go north on Main Street, which becomes Bliss Road, 2.1 miles to CTH-FA. Turn left and go 1.3 miles to Rim of the City Rd. Turn left and go .5 mile to end of road.

### HIKE 1: Easy 1-mile out-and-back to the overlooks

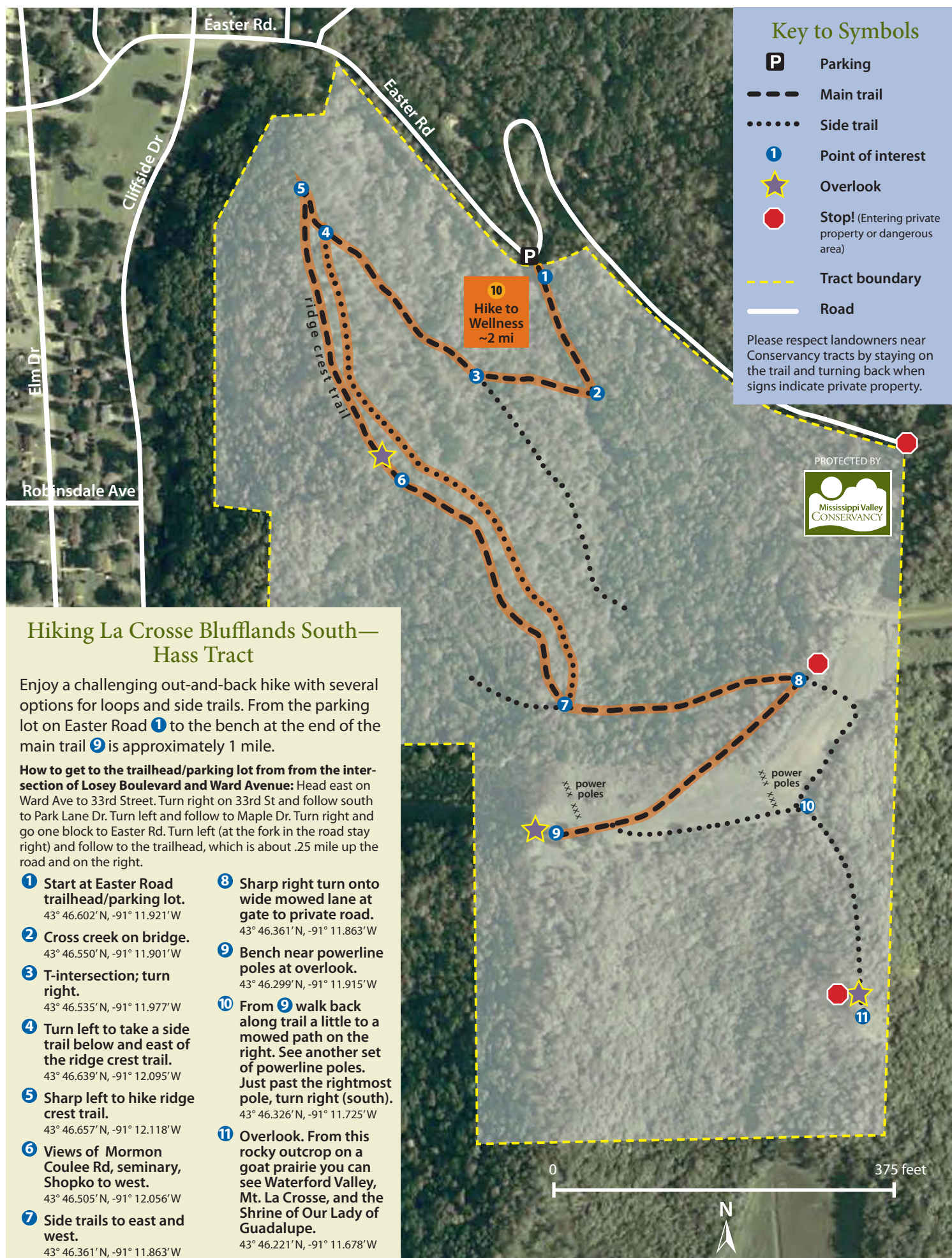
- 1 43° 49.643'N -91° 12.385'W  
**Cul-de-sac at the end of Rim of the City Road.** Hike west.
- 2 43° 49.637'N -91° 12.693'W  
**South upper overlook.** Take the trail northwest.
- 3 43° 49.697'N -91° 12.797'W  
**North overlook.** Take a lower trail east and south.
- 4 43° 49.628'N -91° 12.702'W  
**South lower overlook.** Retrace your steps to return to 1.

### HIKE 2: Challenging 1.75-mile loop up and down the bluff

- 6 43° 49.507'N -91° 12.818'W  
**The end of Bluff Pass, off Hwy. 16.** Start here and go east.
- 5 43° 49.507'N -91° 12.548'W  
**Sharp switchback.** Turn left.
- 4 **South lower overlook (see above).** Take the northwest trail.
- 3 **North overlook (see above).** Take trail northeast.
- 7 43° 49.768'N -91° 12.623'W  
**Intersection.** Go either straight or left.
- 8 43° 49.863'N -91° 12.820'W  
**The View restaurant parking lot.** Go south on the Hwy. 16 sidewalk to Bluff Pass.









## Key to Symbols

- P** Parking
- Main trail
- ..... Side trail
- 1** Point of interest
- ★ Overlook
- Stop! (Entering private property or dangerous area)
- Tract boundary
- Road

Please respect landowners near Conservancy tracts by staying on the trail and turning back when signs indicate private property.

## Hiking Sugar Creek Bluff State Natural Area

Enjoy hiking on a slightly rolling .75-mi (one-way) trail along a woodsy ridgetop that ends at a beautiful goat prairie overlooking the Mississippi River.

**How to get to the trailhead/parking lot from the intersection of highways 14/61 and 35 on the south edge of La Crosse:** Go south on Hwy 35 approximately 32 mi (you'll be about 1.25 mi southeast of Ferryville). Turn left (northeast) on North Buck Creek Rd. Drive about 1 mi to a small parking area on the left with an MVC kiosk.

**1** From the gate at the parking area, follow a wide path that goes through prairie for a short time and then through woods.  
43° 21.004'N -91° 04.071'W

**2** At a Y intersection, a side trail goes left and ends at a private property line. There is no view. Stay right to continue to the overlook.  
43° 20.845'N, -91° 04.353'W

**3** About .75 mi from the parking area, you'll reach the overlook/goat prairie.  
43° 20.620'N, -91° 04.642'W

